

# The PROVAUNT Effect

Knock Stem Weevils over



PROVAUNT Turf Insecticide targets and destroys the lifecycle of Argentine Stem Weevils.



**Provaunt**<sup>®</sup>  
Turf insecticide

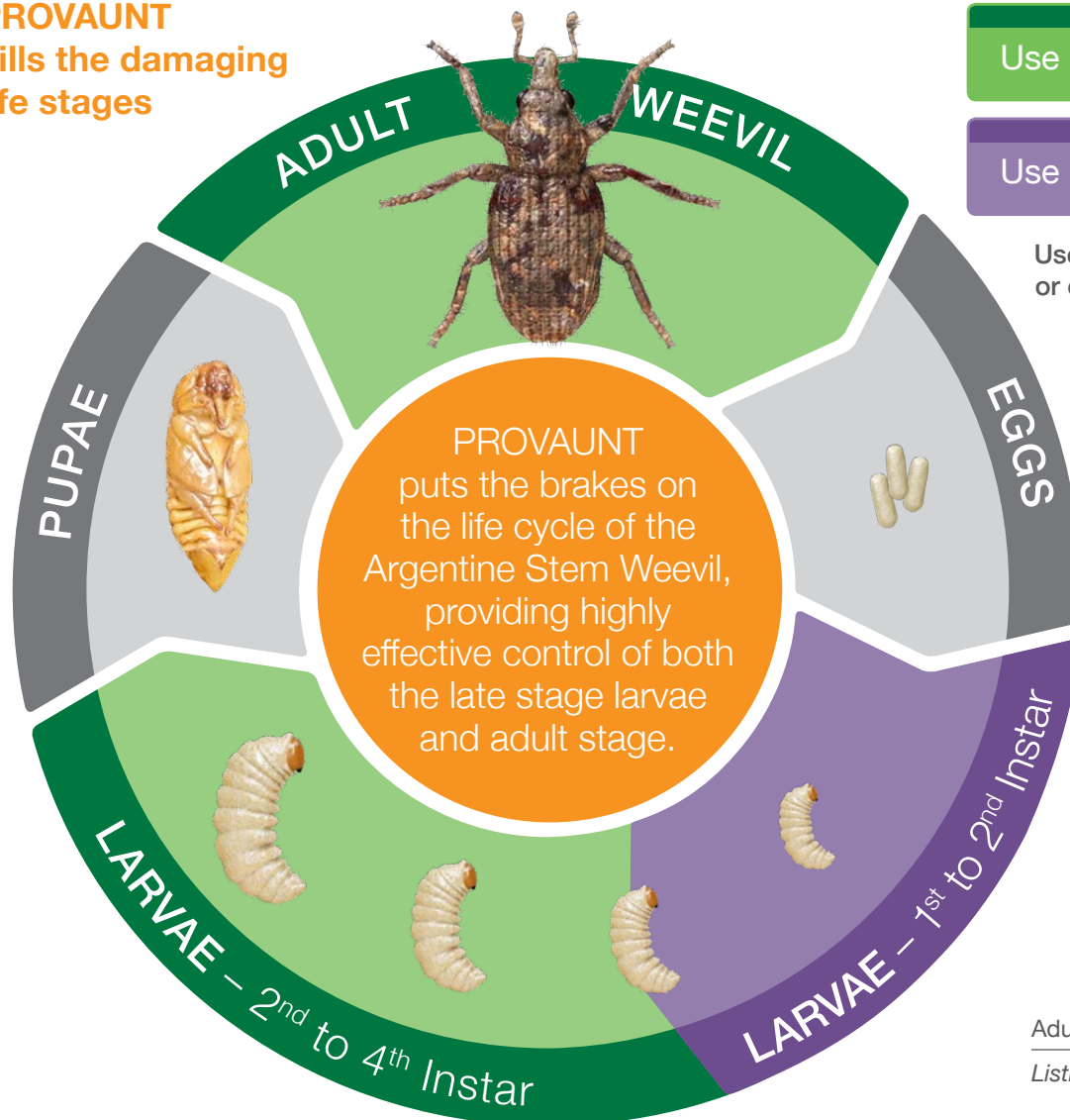
syngenta<sup>®</sup>

# PROVAUNT Turf Insecticide, targets and destroys the lifecycle of Argentine Stem Weevils

## PROVAUNT Kills Multiple Damaging Life Cycle Stages

- Targets and destroys both adult and larvae (only APVMA registration), including the critical 3rd and 4th Instars
- Flexibility; powerful unique chemistry, preventative and curative action
- Shuts down the Argentine Stem Weevil (ASW) life cycle
- New mode of action for the turf industry Group 22A
- Allows for the reduction of organophosphate use (e.g Chlorpyrifos & Diazinon),
- Improved environmental and HSE profile
- Powerful resistance management tool
- PROVAUNT is absorbed into the waxy cuticle of plant tissue, providing good residual activity

**PROVAUNT kills the damaging life stages**



Use PROVAUNT in isolation or combined with SPINNER for total turf protection.

Adult Argentine Stem Weevil

*Listronotus bonariensis*



# The PROVAUNT Effect



PEST CONTROL



## Prevention and Cure

Superintendents that have ASW know how difficult they are to control as there are often a number of life cycles present at any one time throughout the summer. PROVAUNT will control the adults and larvae, including the very damaging and hard-to-control 3rd and 4th instar. The chemistry in PROVAUNT is referred to as Meta Active Technology, which when ingested by the insects leads to paralysis which stops feeding and damage which results in ASW death. PROVAUNT is translaminar, meaning that it lodges in the cells of the turfgrass plants where it can be ingested by the insect. Importantly, PROVAUNT will also control on contact with various life cycle stages of ASW.

PROVAUNT is applied to target all damaging life cycle stages of ASW. An early season application (late winter/early spring) is suggested to target the overwintering adult population when they first emerge, limiting egg laying and early population build up. A further mid-to-late season application will manage both adult and larvae populations in a single treatment.

PROVAUNT should be used in rotation with other chemical groups, such as SPINNER Insecticide, for highly effective resistant management.

## ASW life cycle timings & control options

The life cycle of the ASW is such that at any point in time, you may have any — or all — destructive stages in your precious turf.

The seasonal diagram below is an example showing how lifecycles overlap and the importance of monitoring for ASW life cycle stages (this is for illustrative purposes only and is not designed to be a program).

Early Spring		Spring				Early Summer			Summer		
PROVAUNT		SPINNER	PROVAUNT								
Adult	Egg	1st Instar	2nd Instar	3rd Instar	4th Instar	Pupae					
		PROVAUNT	SPINNER	PROVAUNT							
		Adult	Egg	1st Instar	2nd Instar	3rd Instar	4th Instar	Pupae			
			PROVAUNT	SPINNER	PROVAUNT						
			Adult	Egg	1st Instar	2nd Instar	3rd Instar	4th Instar	Pupae		
				PROVAUNT		SPINNER			PROVAUNT		
				Adult	Egg	1st Instar	2nd Instar	3rd Instar	4th Instar	Pupae	

# PROVAUNT – Label extract

Situation	Pest	Rate	Critical comments
<b>Golf greens and surrounds</b>	Argentine Stem Weevil larvae and adults <i>(Listronotus bonariensis)</i>	1.25 kg/ha	Two seasonal treatment opportunities should be targeted. Apply late winter/early spring when overwintered adults are observed to minimise egg laying and population build up. Early application is essential. Make a second application early summer as a treatment for adults and foliar feeding larvae.
<b>Golf greens and surrounds, Fairways</b>	<b>Caterpillars including</b> Black Cutworm <i>(Agrotis ipsilon)</i> , Lawn Armyworm <i>(Spodoptera mauritia)</i> ,	375 g/ha	Apply immediately when pest activity is noted. To ensure optimum control, delay watering (irrigation) or mowing for 24 hours after application.

**NOTE:** Irrigation is not required when controlling Argentine Stem Weevil adults or larvae. When treating caterpillars, irrigation and mowing should be delayed for 24 hours.



To achieve great results, accurate application is important

Target	Syngenta nozzle	Optimal water rate	Optimal pressure range
Leaf and crown	XC 04	400 to 600 L/ha	2-4 bar

Consult the full registered label for additional information.

Application volume depends on sprayer calibration, including travel speed and pressure setting. For more information on calibration refer to [greencast.com.au](http://greencast.com.au)

### Active ingredient

PROVAUNT contains 200 g/kg indoxacarb, a member of the oxadiazine chemistry group. Group 22A insecticide.

**PROVAUNT is available in a 500g pack size.**

**For more information contact your local Syngenta Territory Manager.**

**For full label detail and SDS use the Syngenta Greencast App or visit [greencast.com.au](http://greencast.com.au)**