

# EDICT

## DISEASE CONTROL

### TECHNICAL INFORMATION

Edict Disease Control is fungicide for use on Lawns, Azaleas, Roses, other general ornamental garden plants. Edict Disease Control provides systemic and contact disease control, both on a preventative and curative basis.

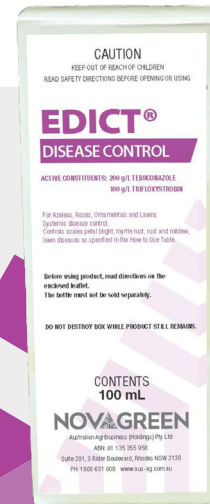
Edict controls Anthracnose, Brown Patch, Winter Fusarium, Leptosphaerulina (Leaf Blight), Curvularia (Fading Out) and Dollar Spot in lawn situations. Edict also controls azalea petal blight, myrtle rust, Botrytis Blight, Leaf Spots as well as mildew.

#### How Edict Disease Control works

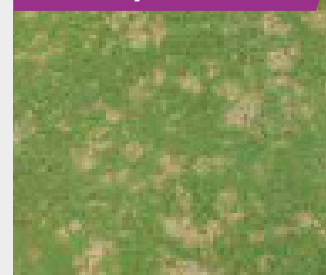
Edict Disease Control is a broad spectrum fungicide containing the active ingredients Trifloxystrobin (100g/L) and Tebuconazole (200g/L). One active ingredient is systemic in the plant and moves to the leaf tips once it enters plant parts. The other active ingredient bonds strongly onto plant surfaces providing long lasted, weather protected disease control.

#### Key Application Information

- ✓ Avoid mowing lawns for 7 days after application.
- ✓ Avoid spray application when rain is expected within 12 hours.
- ✓ Avoid application when the soil is dry and plants are suffering from moisture stress.
- ✓ Do not spray when shade temperatures are likely to exceed 30 °C.
- ✓ Avoid application on edible plants in the garden.



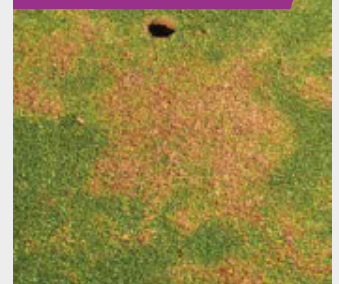
Dollar Spot



Fusarium



Anthracnose



Brown Patch



Leptosphaerulina



# EDICT

## DISEASE CONTROL

### EDICT Disease Control - Use Rates & Label Recommendations

**Lawns:** Use 20mL – 30mL of Edict Disease Control in 10L of water per 100m<sup>2</sup>. For preventive control, apply every 21-28 days when conditions favour disease development (e.g. warm, rainy weather). For curative control, apply when disease symptoms first appear and repeat every 14-21 days. For Brown patch control use the watering can method to ensure product is washed into the crown and root zone.

**Azalea Petal Blight:** Use 7.5mL of Edict Disease Control per 10 Litres of water. Apply thoroughly every two weeks from the expanded bud stage (before buds colour) until the end of flowering.

**Black Spot and Powdery Mildew on Roses:** Use 7.5mL – 15mL of Edict Disease Control per 10 Litres of water. Spray to run-off ensuring thorough coverage of all foliage including the underside of leaves. Apply as a preventative application 7-14 days apart when conditions favour disease development (e.g. warm, rainy weather), or as a curative treatment every 7-14 days after the onset of disease.

**Botrytis Blight, Grey Mould, Downy Mildew and Leaf Spots on Ornamental Garden Plants:** Use 7.5mL of Edict Disease Control per 10 Litres of water. Spray to run-off ensuring thorough coverage of all foliage including the underside of leaves. Apply as a curative treatment every 7-14 days after the onset of disease.

**Myrtle Rust:** Use 7.5mL – 15mL of Edict Disease Control per 10 Litres of water. Apply at first sign of disease or when conditions favour disease development. Curative: For existing infections, apply 2 applications at a 14-day interval. Spray to run-off ensuring thorough coverage of all foliage including the underside of leaves. Preventative: Spray to run-off ensuring thorough coverage of all foliage including the underside of leaves every 14 days according to infection pressure.

This publication is a guide only and no substitute for professional or expert advice. The product label should be consulted before use of any of the products referred to in this publication. Australian Agribusiness (Holdings) Pty Ltd shall not be liable for any results, loss, or damage whatsoever, whether consequential or otherwise through the use or application of products and/or materials referred to herein. Before using, always read the product label. More information: Contact your local Nuturf rep or go to [www.nuturf.com.au](http://www.nuturf.com.au)



**NOVAGREEN**

Novagreen is a brand of Australian Agribusiness (Holdings) Pty Ltd  
ABN 61 135 355 958 | Suite 201, 3 Rider Boulevard, Rhodes NSW 2138 | 1800 631 008