

EDICT DUO

FUNGICIDE

TECHNICAL INFORMATION

Edict Duo is a broad spectrum fungicide containing the active ingredients Trifloxystrobin (100g/L) and Tebuconazole (200g/L).

It is registered for the control of Anthracnose, Brown Patch, Winter Fusarium, Helminthosporium diseases (including White Helmo), Leptosphaerulina, Curvularia, Dollar Spot and ERI (Ectotrophic Root Infecting Fungi) diseases.

Edict Duo is an SC formulation and is manufactured in Australia
Edict Duo is available in 1L pack.

Features

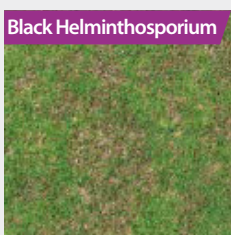
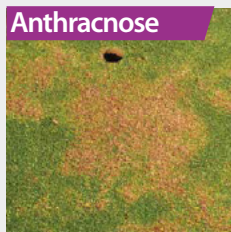
- ✓ Provides curative, protectant and eradicator activity.
- ✓ Excellent rainfast properties. Works in all weather conditions.
- ✓ Broad spectrum of activity. Registered for the control of 9 turf diseases, including foliar and root pathogens.
- ✓ Registered for the control of Leptosphaerulina and Curvularia. There are limited registered options for these pathogens.
- ✓ Registered for the control of ERI diseases, both from a curative and preventative basis.
- ✓ Provides contact, translaminar, mesosystemic and systemic activity, providing inside-out disease protection.
- ✓ Contains two strong active ingredients for turf, with differing modes of action.
- ✓ Available in 1L pack.



Mode of Action

Tebuconazole, one active ingredient in Edict Duo, is a systemic fungicide that once absorbed by roots and leaves moves upwards (acropetal) within the plant. Tebuconazole possesses curative, protective and eradicator activity when controlling turfgrass fungi. Tebuconazole is a Group 3 fungicide. It works in controlling turf pathogens by disrupting the fungi's membrane function. It is classified as a DMI inhibitor as it stops the demethylation step in the biosynthesis of ergosterol, a vital component of cell walls in many fungi.

Trifloxystrobin is the other molecule in Edict Duo Fungicide. Trifloxystrobin has the ability to strongly bond onto plant surfaces through penetration of the waxy layers. This forms a secure reservoir of fungicide to provide long-lasting, weather-protected disease control. Trifloxystrobin works by interfering with respiration in plant pathogenic fungi. It is a potent inhibitor of fungal spore germination and mycelial growth.



EDICT DUO

FUNGICIDE

EDICT DUO Fungicide - Use Rates & Label Recommendations

PATHOGEN	APPLICATION RATE	WATER RATE	KEY COMMENTS	
Brown Patch (<i>Rhizoctonia solani</i>)	2L/ha (20mL/100m ²)	800-1600L/ha (8-16L/100m ²)	Apply sufficient irrigation quickly following irrigation to wash Edict Duo into the crown and upper root zone (3-6mm of irrigation).	
Dollar Spot (<i>Sclerotinia homoeocarpa</i>)	3L/ha (20mL/100m ²)		800-1600L/ha (8-16L/100m ²)	For preventative control apply on a 21-28 day interval when conditions are favourable for disease development. To control existing infections apply on a 14-21 day interval.
Winter Fusarium or Fusarium Patch (<i>Microdochium nivale</i>)	2L/ha (20mL/100m ²)			
Anthraxnose (<i>Colletotrichum graminicola</i>)	2L/ha (20mL/100m ²)			
Secondary Diseases <i>Leptosphaerulina</i> spp., <i>Curvularia</i> spp.	2L/ha (20mL/100m ²)			
Black and White Helminthosporium (<i>Bipolaris</i> spp., <i>Drechslera</i> spp., <i>Exserohilum</i> spp.)	2L/ha (20mL/100m ²) 280mL per bowling green			Make monthly preventative applications from December to March.
ERI (Ectotrophic Root Infecting Fungi)	2L/ha (20mL/100m ²)			
Spring Dead Spot	2L/ha (20mL/100m ²)			

Note: Edict Duo is also registered for a range of ornamental and landscape plant diseases such as Azalea Petal Blight, Botrytis Blight, Grey Mould, Leaf Spots, Rusts (including Myrtle Rust), Powdery Mildew and Black Spot. For additional information, see the label.

Maximising Performance

- ✓ Good turf disease control requires good coverage. Application should be made using sufficient water to ensure thorough coverage: 800-1,600L of water per hectare.
- ✓ For preventative control apply Edict Duo on a 21-28 day interval when conditions are favourable for disease development. For curative control apply Edict Duo on a 14-21 day interval.
- ✓ For Brown Patch and ERI disease control, apply sufficient irrigation quickly following irrigation to wash Edict Duo into the crown and upper root zone (3-6mm of irrigation).
- ✓ For ERI disease control, make monthly preventative applications in the three months preceding the disease season (usually early Spring).

- ✓ From a resistance management perspective, do not apply more than two consecutive sprays of Edict Duo unless mixed with a protectant fungicide from group 14, 28, M2, M3, M4 or M5.
- ✓ Edict Duo acts very rapidly and where the turf is of a low nutritional status, a slight yellowing may be seen. This will be corrected by nitrogenous fertiliser applications. Where possible, it is recommended that a fertiliser program should precede the fungicide application.

This publication is a guide only and no substitute for professional or expert advice. The product label should be consulted before use of any of the products referred to in this publication. Australian Agribusiness (Holdings) Pty Ltd shall not be liable for any results, loss, or damage whatsoever, whether consequential or otherwise through the use or application of products and/or materials referred to herein. Before using, always read the product label. More information: Contact your local Nuturf rep or go to www.nuturf.com.au



NOVAGREEN

Novagreen is a brand of Australian Agribusiness (Holdings) Pty Ltd
ABN 61 135 355 958 | Suite 201, 3 Rider Boulevard, Rhodes NSW 2138 | 1800 631 008