



FOR MORE INFORMATION ON FOLI MAX, CONTACT YOUR LOCAL TERRITORY MANAGER OR CALL 1800 631 008.

www.nuturf.com.au

EMAIL: FoliMAX@nuturf.com.au



Liquid nutrition at its best

FoliMAX MLR-8™

Liquid Soil Ameliorant

Liquid nutrition at its best

FoliMAX MLR-8

MLR-8 is the perfect blend of soluble Calcium for soil amelioration and plant uptake. MLR-8 is a liquid soil conditioner designed to improve soil performance including water movement, root development and aggregate stability.

MLR-8 is designed to improve the functional capacity of the soil. Soil performance is often overlooked when managing a turf program, yet soil capacity influences many of the essential soil functions that facilitate healthy turf growth. Improved soil stability allows for greater water infiltration (improved water use efficiency) and hydraulic conductivity, nutrient movement (improved nutrient use efficiency) and microbial activity throughout the targeted soil profile.



Key Benefits of FoliMAX MLR-8

- Soluble Calcium source, readily available in the soil and plant upon application
- Improved water movement through soil profile due to increased soil porosity
- Reduces Sodium levels in the soil to improve soil structure and to reduce soil sealing
- Ease of application, readily mixes with Soil Prima
- Enhances liquid nutrient uptake
- Compliments Gypsum and Lime applications as it is readily available to the turf system and is suitable for all soil types and turf surfaces

FoliMAX MLR-8 Guaranteed Minimum Analysis:

Calcium (Ca): 6%	Manganese (Mn): 0.019%
Carbon (C): 10%	Boron (B): 0.012%
Potassium (K): 1.5%	Fulvic Acid: 0.4%
Magnesium (Mg): 0.25%	
Sulfur (S): 0.25%	
Iron (Fe): 0.19%	

FoliMAX MLR-8 Product Characteristics:

pH: 12 - 12.5
Specific Gravity: 1.26
Appearance: Brown, viscous product with slight ammonia smell
Solubility: 100%

FoliMAX MLR-8 contains 6% Soluble Calcium, Carbon, organic acids and nutrients proving both soil and plant benefits.

Besides being very important for plant health and growth as a nutrient, Calcium is also important in the correction of soils high in Sodium (Na) (and in soils using high potassium recycled water).

Many types and formulations of Calcium are available to turf grass managers. Most Calcium sources are highly insoluble in water making it difficult to get the Calcium into the soil profile where it is needed, or are relatively high in solubility and as a result have a high salt index. For this reason, complexed Calcium such as MLR-8 will be more effective than non-complexed calcium in treating your soil root-zone for both flushing of Sodium and uptake of Calcium into the growing turf plant.

How does the application of MLR-8 reduce Sodidity?

The key reason why MLR-8 is so effective in reducing Sodium is a direct result of its high level of soluble Calcium. The chart below shows the amount of soluble Calcium contained within traditional soil ameliorants and laboratory testing clearly demonstrates that MLR-8 has more than 5 times the water solubility of Calcium per litre when compared to Gypsum and Lime.

MLR-8	Gypsum	Lime
52g/L 13g/L as 1:4 Field Solution (Applied at 50L in 200L Water)	2.4g/L Water Solubility	0.015g/L Water Solubility
1 Litre = 13g/L as Soluble Calcium	1 Litre = 2.4g/L as Calcium Sulphate	1 Litre = 0.015g/L as Calcium Carbonate

MLR-8 Increases the total number of pores (porosity) in the soil which has major benefits to turf performance some of which include:

- Improves water infiltration and movement through the profile
- Reduces sodium accumulation in the root zone allowing for better turf performance
- Increases capacity for roots to develop into soil profile
- Increase surface area for nutrient retention, nutrient exchange and nutrient uptake
- Improves the capacity to leach salts through the profile and away from the turf root zone

X-RAY 3D SOIL SCAN

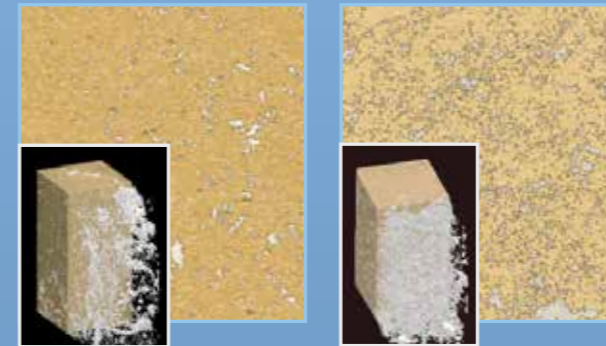
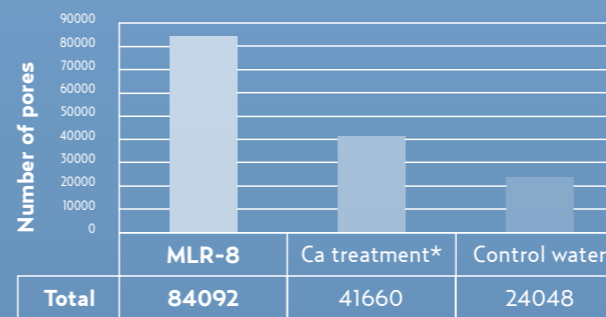


FIG.1 Cross section and a 3D image of a soil sample treated with water only

FIG.2 Cross section and a 3D image of the soil samples treated with MLR-8

TOTAL NUMBER OF PORES



*Ca Treatment - Calcium Chloride



FoliMAX MLR-8 APPLICATION INFORMATION

Apply MLR-8 as part of a balanced soil nutrition program throughout the year. Apply in a minimum of 200L water per hectare and follow with 4-6mm irrigation. Do not apply when temperatures exceed 30°C.

APPLICATION RATE CHART

Situation	Rate/Ha	Comments
Initial Application: High Cut Turf (e.g. sportsfields, racetracks and fairways)	20-60L	Apply at 4-8 week intervals or as recommended by your Territory Manager.
Maintenance Application: High Cut Turf (e.g. sportsfields, racetracks and fairways)		
Initial Application: Fine Cut Turf (e.g. golf and bowling greens)		
Maintenance Application: Fine Cut Turf (e.g. golf and bowling greens)		

FOR MORE INFORMATION ON FoliMAX MLR-8 CONTACT YOUR LOCAL TERRITORY MANAGER OR CALL 1800 631 008.

www.nuturf.com.au

EMAIL: FoliMAX@nuturf.com.au

OTHER KEY PRODUCTS IN THE FoliMAX RANGE

FoliMAX Bi-Pass

Bi-Pass is a soil and water conditioner that reduces bicarbonate and carbonate in irrigation water and soil solution. Bi-Pass contains micro-nutrients and also increases critical micro-nutrients that are catalysts for macro-nutrient absorption.



FoliMAX Soil Prima

Soil Prima is a liquid soil conditioner that improves soil aggregation, soil structure and nutrient utilisation in the root zone. Contains modified patented humates, which acts as a complexing agent for mobilising soil nutrients in forms which are readily available for plants.

