



EQUIPMENT SOLUTIONS

Heavy Duty Scarifier Operators Manual



EQUIPMENT SOLUTIONS

Equipment Solutions Pty Ltd
ABN 75 001 429 714

Ph 02 8709 9000



NEW PRODUCT REGISTRATION

To validate warranty, this registration form must be returned within 15 days of delivery

Company Name.....

Address.....

.....

..... **Postcode:**.....

Contact Person:.....

Position:.....

Contact Details:.....

Authorised Signature:.....

I have read and understand the warranty policy and maintenance sections of operators manual for the machine described below

Machine Model:.....

Serial Number:.....

Date of Purchase:.....





EQUIPMENT SOLUTIONS

SAFETY

Safety is the utmost importance when operating turf machinery

To ensure safe operation of the Equipment Solutions HD series Scarifier, please follow the following safety guidelines.

Always carry out a pre-operational inspection of machine to ensure it is in safe operational condition.

Keep ALL inexperienced people away from the machine.

This machine should only be operated by experienced operators.

Never attempt to work on or adjust the machine while the PTO or the tractors engine is running.

Always ensure the tractors engine is turned off, when fitting or removing the Scarifier from the tractor.

The Scarifier should be kept well clear of, when the tractor engine is running.

Guards are fitted to assist in safety and the unit should never be used WITHOUT these in place.

TT Series Renovators

Operating Instructions

1. Attach the renovator to the tractor's three point linkage using the floating top link and a suitable sized top link to allow a slack connection. This allows the renovator to follow the contour of the turf. If it is fitted with no slack, damage to the machine, tractor or turf may occur.



2. With the TT Renovator on the ground, measure the PTO shafts required length (allowing enough adjustment for the machine to be lifted).

3. Start the tractor and lift the machine off the ground. Engage PTO to 540rpm, select desired gear, move forward slowly and lower machine. Travel a short distance, raise the machine, disengage PTO and stop tractor.
DO Not adjust shaft while PTO is engaged.
4. Check depth of cut and adjust (if required) by the winders at each end.
5. Repeat steps 3 and 4 until desired depth is obtained.



Available Shafts

Scarifying Shaft:

3mm wide Tungsten Tipped Blades spaced at 38mm intervals. Two rows of blades are fitted at 180° to form a spiral, allowing a smooth cutting action to a depth of 50mm.

Fine Scarifying Shaft:

1.6mm reversible Blades spaced at 25mm intervals. Two rows of blades are fitted at 180° to form a spiral, allowing a smooth cutting action to a depth of 25mm.

Shaft Removal & Replacement

Removal:

- Remove belts from Drive End.
- Remove bolts from bearing housings
- Lift machine on 3 point linkage to clear blades and drive forward to clear shaft.

Replacement:

- Ensure all dirt and grit is cleared away from bearing housing surfaces before fitting of shaft.
- Lift machine on 3 point linkage to clear blades and reverse tractor to position shaft in between rollers on machine.
- Lower machine slowly ensuring bearings and shaft are located correctly.
- Install bolts and tighten.
- Fit belts and adjust to correct tension.

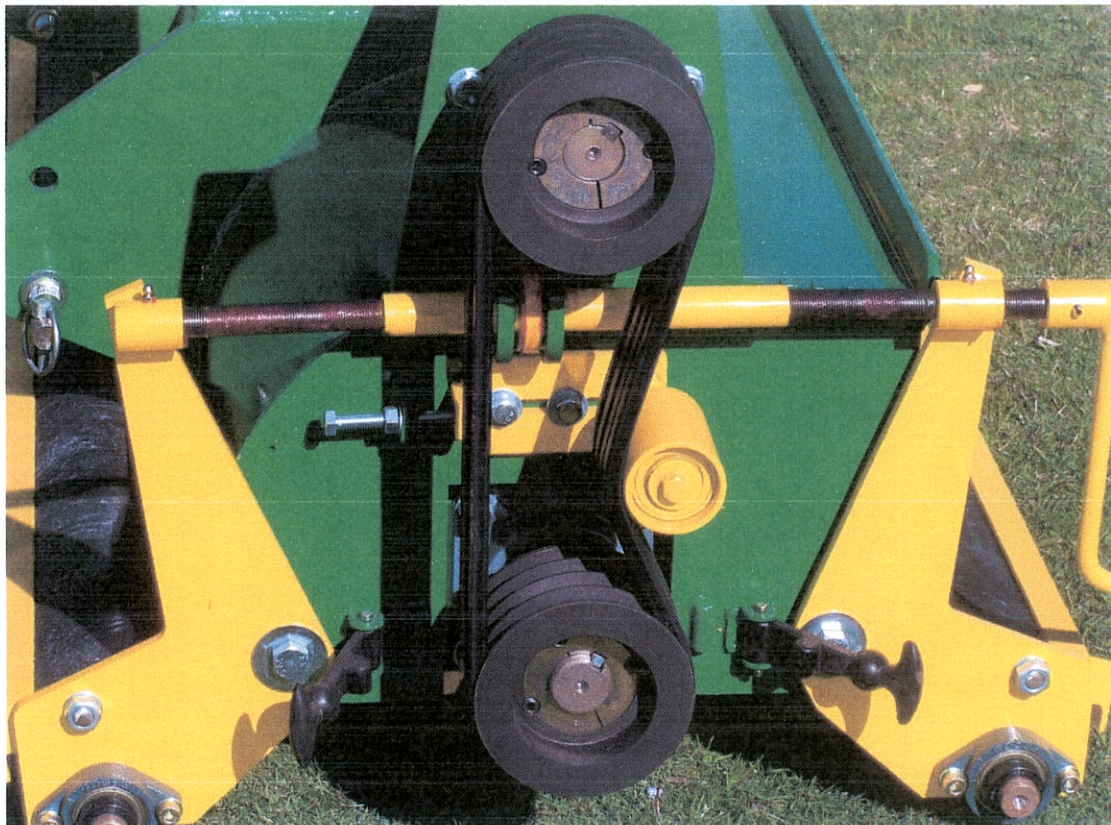
Maintenance Routine

Weekly:

- Grease all grease nipples.
- Check belt tension.

Monthly:

- Check bearing locking collars are tight.
- Check belt condition and tension.
- Check gearbox oil.





EQUIPMENT SOLUTIONS

PARTS LISTING

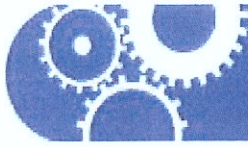
EQUIPMENT SOLUTIONS HD

SCARIFIER

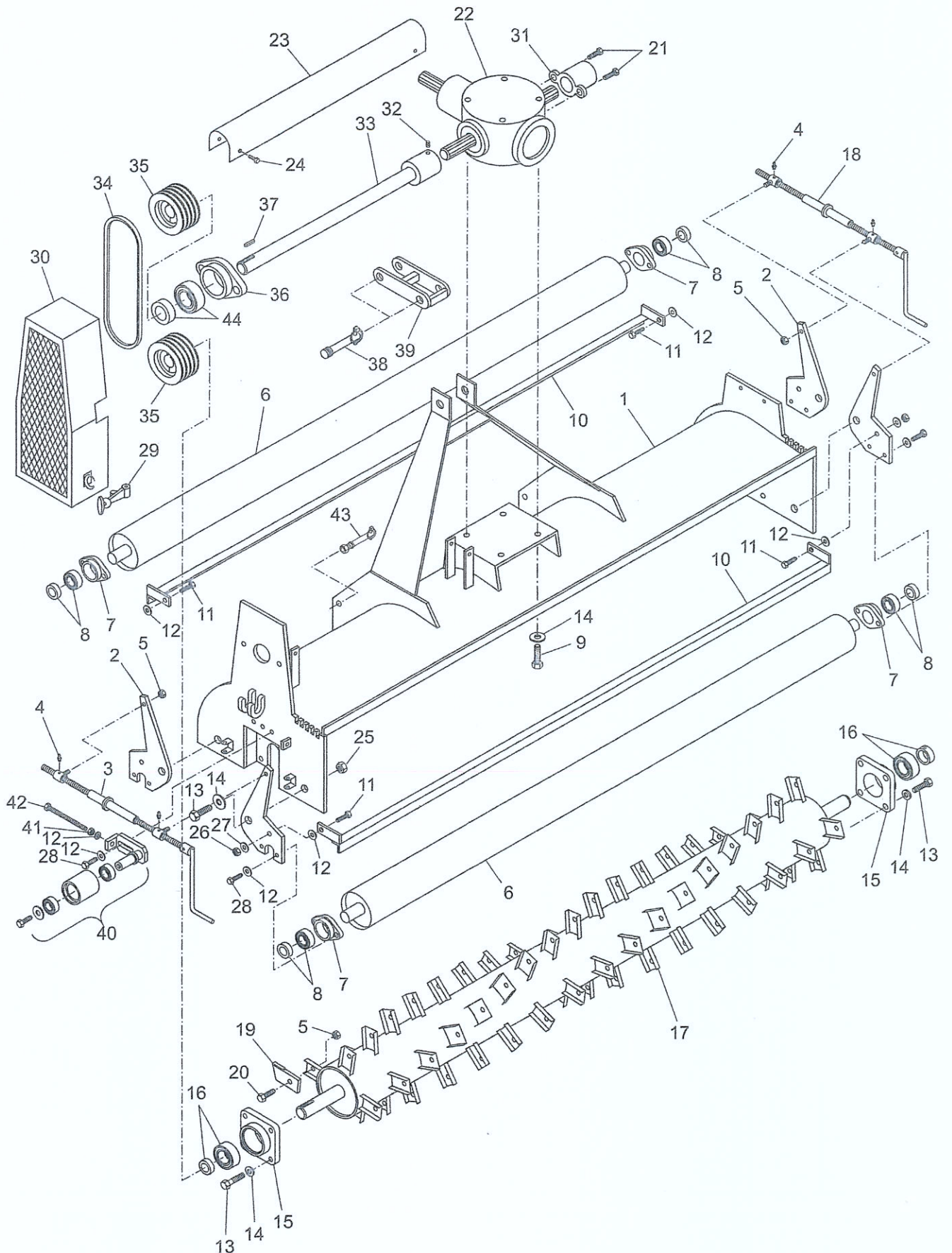


EQUIPMENT SOLUTIONS

87 Allingham Street, Condell Park, NSW, 2200



EQUIPMENT SOLUTIONS





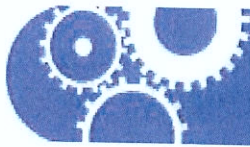
EQUIPMENT SOLUTIONS

Frame Work

Part Number

Description

Frame Work	Part Number	Description
1	PSCAR900	Renovator Body 900
1	PSCAR1200	Renovator Body 1200
1	PSCAR1500	Renovator Body 1500
2	PSCAR23	Roller Mounting Bracket
3	PSCAR24	LH Height Adjuster - Drive Side
4	PS22	Grease Nipple
5	*H3125	Nyloc Nut
6	PSCAR26-900	Roller 900
	PSCAR26-1200	Roller 1200
	PSCAR26-1500	Roller 1500
7	PBRGFB205	Bearing Housing
8	PBRGAEL205-100W3	Bearing
9	*H3201	Bolt
10	PSCAR10-900	Scraper Bar 900
	PSCAR10-1200	Scraper Bar 1200
	PSCAR10-1500	Scraper Bar 1500
11	*H3080	Bolt
12	*H3101	Washer
13	*H3197	Bolt
14	*H3202	Washer
15	PBRGFB208	Bearing Housing
16	PBRGUEL208-108D1W3	Bearing
17	PSHAFT900	Renovator Shaft 900
17	PSHAFT1200	Renovator Shaft 1200
17	PSHAFT1500	Renovator Shaft 1500
18	PSCAR25	RH Height Adjuster - Non Drive Side
19	PVSG42	Blade
20	*H3128	Bolt
21	*H3127	M10 Bolt
22	PGEAR01	Gearbox - 900- 1200 model
22	PGEAR02	Gearbox - 1500, 1800, 2000 model
23	PSCAR16-900	Extension Shaft Guard - 900 model
23	PSCAR16-1200	Extension Shaft Guard - 1200 model
23	PSCAR16-1500	Extension Shaft Guard - 1500 model
24	*H3085	Bolt
25	*H3205	Nut
26	*H3124	Nut
27	*H3029	Washer
28	*H3107	Bolt
29	PPB06	Bonnet Clamp
30	PSCAR1500	Belt Guard
31	PSCAR28	Shaft Cover
32	*H3113	Grub Screw
33	PEXSHAFT900	Extension Shaft 900 model
33	PEXSHAFT1200	Extension Shaft 1200 model
33	PEXSHAFT1500	Extension Shaft 1500 model
34	PVBELTB41	Vee Belt x 4
35	PPULL30	Pulley
36	PBRGFL207	Bearing Housing
	* Means Hardware Item	



EQUIPMENT SOLUTIONS

Frame Work	Part Number	Description
37	Keysteel	Keysteel
38	PPB33	Linch Pin
39	PSCAR30	Floating Top Link
40	PSCAR14	Belt Tensioner Assembly
41	*H3179	Nut
42	*H3041	Bolt
43	PPB35	3 point Linkage Pin
44	PBRGAEL207W3	Bearing
HARDWARE ITEMS		
	H3029	Washer
	H3041	Bolt
	H3080	Bolt
	H3085	Bolt
	H3101	Washer
	H3107	Bolt
	H3113	Grub Screw
	H3124	Nut
	H3125	Nyloc Nut
	H3127	Bolt
	H3128	Bolt
	H3179	Nut
	H3197	Bolt
	H3201	Bolt
	H3202	Washer
	H3205	Nut
<p>Blades on standard Renovator Shaft are @ 1 1/2" Spacings with 3mm single tipped blades</p>		
<p>Optional Shaft Available @ 1" spacings with 1.6mm reversible dual tipped blades</p>		