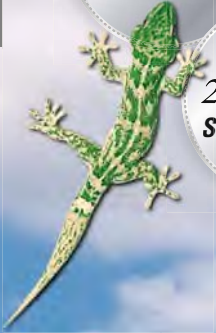


Profihopper zDrive
Profihopper iDrive
Profihopper 4WDi



AMAZONE Profihopper with PowerCompactor and SmartCut

The self-propelled machine for professional green space maintenance



- ⊕ “Even on heavily sloping ground the Profihopper steers straight ahead surprisingly well.”
(Practice test from the magazine ‘Kommunaltechnik’ · 07/2013)

Profihopper

It does nothing but impress with its high output, quality of work and robustness!



Profihopper

Faster, economical, better!

	Page
The benefits at a glance	4
The all-seasons machine	6
Mowing principle Options	10
Profihopper zDrive · Profihopper iDrive	12
Profihopper 4WDi	14
Options	16
Blade selection	19
Technical data	20



Watch it on TV:
www.amazone.tv



Profihopper zDrive, Profihopper iDrive and Profihopper 4WDi

New high output mowers, scarifiers and collectors

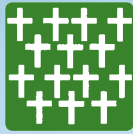
The 10 top benefits: compare them for yourself!

- ⊕ Front mowing deck with integrated PowerCompactor collecting and transfer system via horizontal and vertical augers in a 1.25 m working width.
- ⊕ Safe operation on slopes with the intelligent 4WDi four-wheel drive.
- ⊕ Compact design and 0-turning circle. Precise in operation, even into corners, without first driving across the material to be cut. Manoeuvrable and fast in any terrain.
- ⊕ SmartCut exact cut rotor with V-shaped knife arrangement for an improved cutting and collecting performance at a reduced noise level. Mowing in any weather, even in damp grass. Start early in the morning without hesitation!
- ⊕ Blade change without tools – quick, simple and safe!
- ⊕ Versatile operation, all year round:
 - Spring – scarifying
 - Summer – mowing
 - Autumn – leaf collection
- ⊕ Less time-consuming emptying: Thanks to the compressing concept of the PowerCompactor system, more than 1,000 litres of non-compressed cuttings can be packed into the 730 litre collecting hopper.
- ⊕ The PowerCompactor conveying system with its augers is insensitive to damage! Even tins, horse droppings and other rubbish can be collected.
- ⊕ The force-feed conveying of the PowerCompactor system operates without air assistance and is therefore virtually dust-free and quiet for the driver, passers-by and residents. Compliance is achieved with all environmental regulations.
- ⊕ High-lift tipping to 2.1 metres for quick emptying into lorries or trailers – comfortable discharge to wherever you want.





Parks



Cemeteries



Golf courses



Green spaces in residential areas



Lawns



Sport fields



Campsites



Paddocks



The Profihopper – ‘THE’ machine for all seasons

Scarifying and mowing



⊕ “The mowing unit and collection hopper, they couldn’t be any better.” Here all the testers agreed: “The 1.25 m wide rotor mower does a perfect job.”

(Practice test from the magazine ‘Kommunaltechnik’ · 07/2013)



Mowing

The Profihopper does a superb job in nearly all climatic or vegetative conditions. Its well-proven AMAZONE mowing and scarifying system is a guarantor for well-groomed lawns. Whether the sun is shining or the early morning dew is still on the grass – work can begin. The Profihopper is not bothered whether the grass is wet, exceptionally tall or even thick – and it always achieves first class results.

Scarifying

The AMAZONE Profihopper is also a super scarifier. The scarifying knives, which are quickly attached without tools, slit the turf and thin out the lawn's surface. Thatch is removed, collected and at the same time the soil is rolled. Scarifying improves the exchange of light, air, water and nutrients, resulting in a substantial improvement in the soil structure.

Rolling

Rolling immediately after mowing is an ideal action to achieve a fine finish and well-cared for lawn.

Mulching

Through the special mounting of the knives on the big diameter rotor, the grass-stalks are cut off and then shredded many times. For mulching, the mulch flap is just inserted into the Profihopper and the cuttings are spread evenly across the mown area. Important nutrients are consequently then fed back into the soil.



⊕ “That is especially good where one has to mow around trees or poles. The hydraulically assisted steering functions smoothly.”
 (Practice test from the magazine 'Kommunaltechnik' · 07/2013)



The Profihopper – ‘THE’ machine for all seasons

Collecting and aeration



⊕ “Most of the drivers liked the seating position.”
(Practice test from the magazine ‘Kommunaltechnik’ · 07/2013)

⊕ Large hopper volume





⊕ “The collection and the transfer of cuttings or leaves performs very well, even in wet conditions.”

(Practice test from the magazine ‘Kommunlatechnik’ · 07/2013)

Collecting leaves

Thanks to the superb suction effect almost “anything” (leaves, chestnuts, acorns, etc. ...) is collected and the hopper capacity is optimised. In addition, the chopping up of the leaves by the rotating blades speeds up their decomposition. Often in the spring, autumn leaves remain covering the ground and the grass can only grow with difficulty. To improve and aid that grass growth, those leaves can be collected and the lawn aired in a single pass by simply adding the scarifying blades.



Rubbish collection

The mechanical auger conveying system is strong and robust. Even collecting tins, paper and other rubbish that accrues in parks and leisure areas present no problem.

Paddock Maintenance

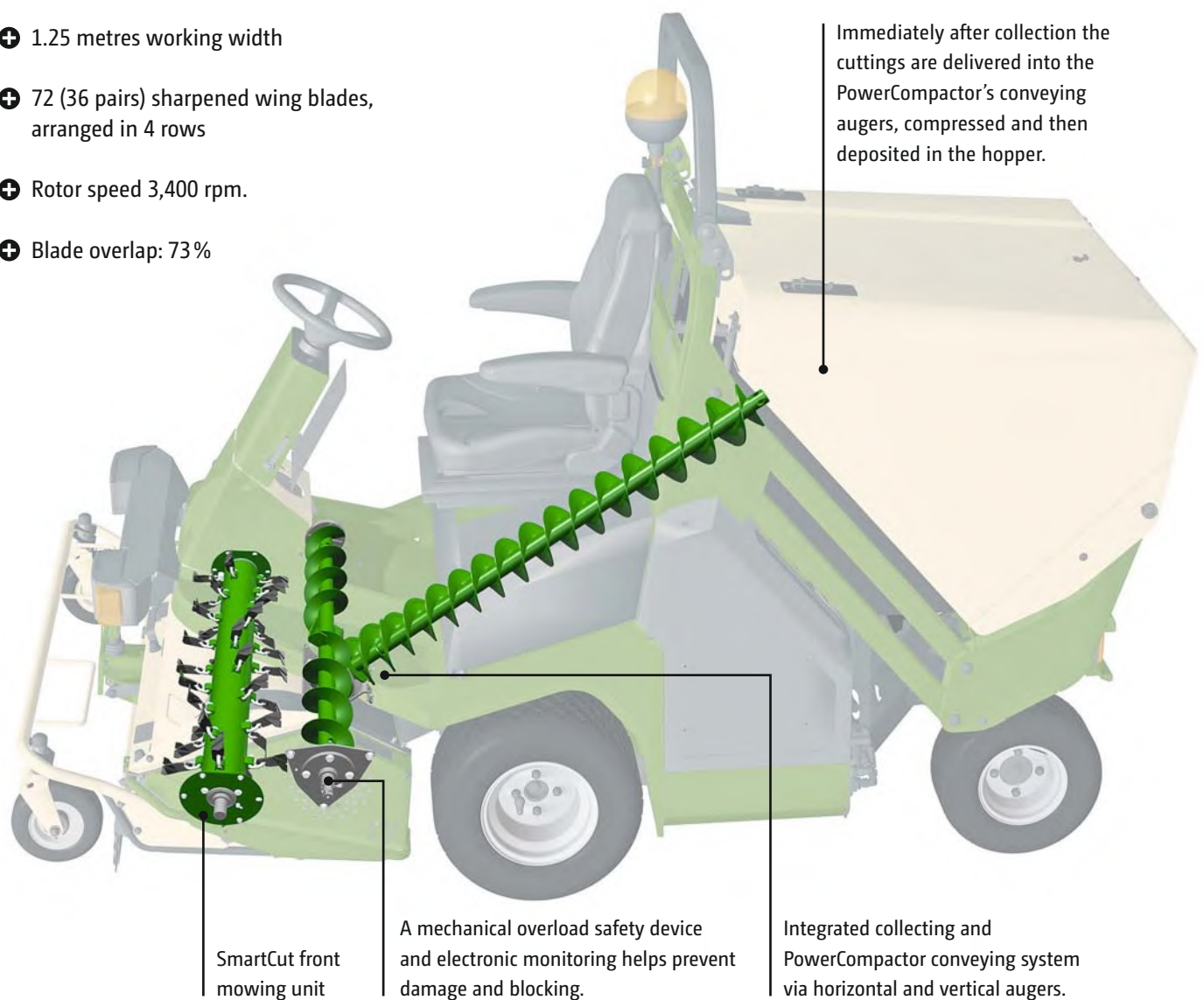
Healthy animals thanks to clean paddocks. The Profihopper mows patches of rank grass and the droppings are reliably collected.



Ingenious: mowing – scarifying – compressing – collecting – emptying – mulching

The mowing principle: PowerCompactor and SmartCut:

- ⊕ 1.25 metres working width
- ⊕ 72 (36 pairs) sharpened wing blades, arranged in 4 rows
- ⊕ Rotor speed 3,400 rpm.
- ⊕ Blade overlap: 73%



- ⊕ PowerCompactor:
over 1,000 litres of conventionally collected grass cuttings –
compressed into a 730 litre hopper

- ⊕ Precise and clean cutting in a single pass
with the SmartCut exact cut rotor



⊕ “The mowing unit cuts perfectly and, even under wet conditions, the cuttings are reliably delivered via the conveying augers into the large collecting hopper.”
(Practice test from the magazine ‘Kommunaltechnik’ · 07/2013)



⊕ “Also praised was the high-lift emptying of the collecting hopper. The Profihopper can unload cuttings up to a height of 2.1 m.”
(Practice test from the magazine ‘Kommunaltechnik’ · 07/2013)

PowerCompactor: extended and reliable operation without emptying!

With the PowerCompactor system, the Profihopper enters into a new performance class. The PowerCompactor features an auger style conveyor system consisting of one longitudinal and one cross auger. The longitudinal auger now has a diameter of 150 mm and thus a doubled delivery volume, resulting in higher work rates and faster forward speeds even in tall grass, compared to similar machines.

Immediately after collection the cuttings are compressed via the auger conveyor system and collected in the hopper. Thanks to this compression, 1,000 litres of uncompressed cuttings can be fitted into the 730 litre collection hopper. This principle increases the hopper capacity by 50 %. Compared with a usual mower, the capacity of the Profihopper thus amounts to 1,000 litres. Time losses due to hopper emptying are reduced immediately by 50 % and simultaneously the efficiency of both machine and manpower is increased.

Good for the operator and the environment:

The delivery system does not require any air assistance and in this way operates at low noise levels and is virtually dust-free.

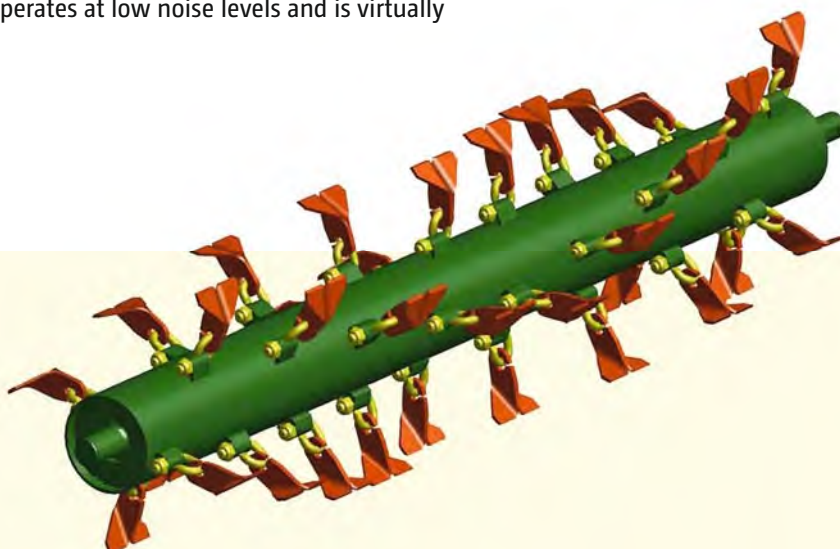
The high-lift discharge

The design of the collection hopper allows emptying at heights of up to 2.1 metres and the hopper pivot point has been positioned well back enabling high-sided transport vehicles to be easily and fully loaded.



AMAZONE SmartCut exact cut rotor

The outstanding feature of the rotor is the specific V-shaped arrangement of the knives resulting in an improved performance both when cutting and collecting; and at a reduced noise level. For this innovation, AMAZONE was awarded a Silver Medal by the Innovations Jury at Demopark 2013.



⊕ AMAZONE SmartCut exact cut rotor

Side view of the rotor



The Profihopper zDrive with lever steering and Zero-Turn

Highest output capability in the tightest of spaces

The simultaneous mowing, scarifying and collecting in one pass makes the Profihopper zDrive the all-round tool for green space maintenance. Equipped with the new SmartCut front mowing deck, high quantities of grass and leaves represent no problem for the Profihopper. With its integrated PowerCompactor collecting system, which conveys the material via augers to the hopper, the mowing deck ensures the perfect collection of the cuttings. The force-feed conveying system, via augers without the need for an air stream, makes for a dust-free job. Plus, through the improved material flow and compression qualities, the quality of cut is also improved, as is also the work rate.



⊕ With lever steering and Zero-Turn:

The lever steering on the Profihopper zDrive allows a real zero-turn around the steering axle to increase the flexibility in tightest spaces. This allows precise operation without first driving over the material to be mown. The SmartCut exact cut rotor with high capacity mowing and scarifying capability is the ideal solution for mowing and collecting grass and scarified material.

The Profihopper iDrive with steering wheel and 0-turning circle

Comfortable and simple to operate

For operation in normal terrain, the Profihopper iDrive is recommended. The front wheel drive is reliably provided via two hydraulic motors. It is equipped with the new SmartCut high capacity mowing deck and impresses with its compactness, efficiency and operating performance. Intuitive steering via the steering wheel is also standard on the Profihopper iDrive.



Profihopper 4WDi with intelligent four-wheel drive and 0-turning circle

Safe on any terrain

On the 4WDi Profihopper, the speed of each of the four wheels, driven by their own hydraulic motor, is controlled individually depending on the steering wheel position and forward speed. The speed at which the front wheels are driven is dependent on the rear steered wheels, enabling the vehicle to turn on the spot around one front wheel (0-turning circle). This increased manoeuvrability, especially on slopes, allows a more efficient operation. Via a special Award Winning system, the Profihopper only drives the rear steered wheels when the front wheels need assistance – meaning four-wheel drive only when necessary. The system functions both in forward and reverse gear.





⊕ True 0-turning circle



⊕ Precise operation on slopes

4WDi technology

On the 4WDi Profihopper every wheel is driven and – depending on the accelerator pedal depression and steering angle – at the appropriate speed so that the machine does not require a differential lock. On bends, and especially on slopes, the system shows the benefits of this ideal drive because every wheel is driven with the optimum speed at any time. This means greater safety, better operational performance and less wheel marks left in the lawn.

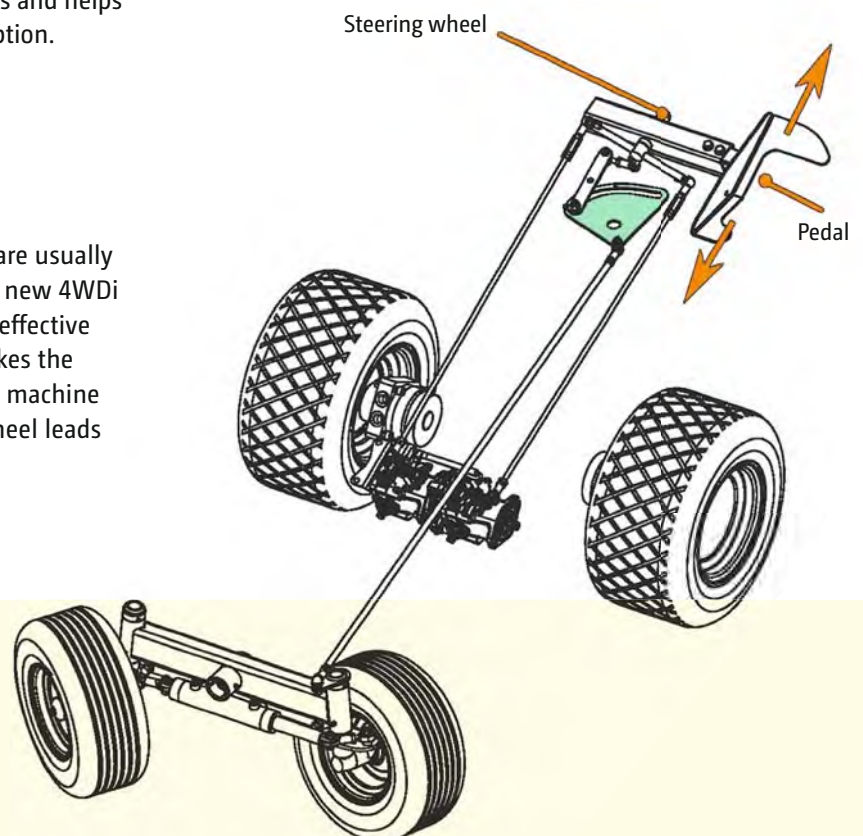
The rear wheels are connected in series with the front wheels. In this way the front wheels – via the hydraulic system – can be assisted if necessary, by the rear wheels in case of slip, if conditions are wet or when on slopes. This achieves the optimum utilisation of the engine’s performance under all operational conditions and helps the environment with reduced fuel consumption.

Important for reliability

Instead of costly electronic switches which are usually necessary for such control mechanisms, the new 4WDi Profihopper is provided with a robust, cost-effective mechanical system. This unique system makes the Profihopper 4WDi the first four-wheel drive machine with a true 0-turning circle. The steering wheel leads to more intuitive steering.

Result is improved output

Because of this, the Profihopper offers a significant number of benefits in practical operation: for example, when mowing around obstacles or turning, less manoeuvring is required. Also, when working under difficult operational conditions – for example, when slipping on wet ground or when working on sloping terrain – the operator especially benefits from the intelligent four-wheel drive. The danger of slippage is minimised because every wheel is driven at all times at the optimum speed. This results in greater safety and improved operational performance, for example less wheel marks on lawns.



Comfortable – Compact – Operator friendly

The roll over protection bar offers the operator additional safety.

⊕ “The steering wheel can be adjusted to suit the driver – ideal.”

(Practice test from the magazine ‘Kommunaltechnik’ 07/2013)



From choice, either extra wide tyres or cleated tyres are available.

Available with heated seat!
As an alternative: comfort seat with air suspension is available!

New optional weatherproof canopy

To extend the scope of operation of your Profihopper in any weather conditions, a weatherproof canopy is available.





⊕ Ideal accessibility



⊕ The use of high class components, such as the powerful 18 kW (24.5 HP) diesel engine, sets the machine apart as the choice of professionals.



⊕ Everything is convenient and simple to operate

AMAZONE Cooling System

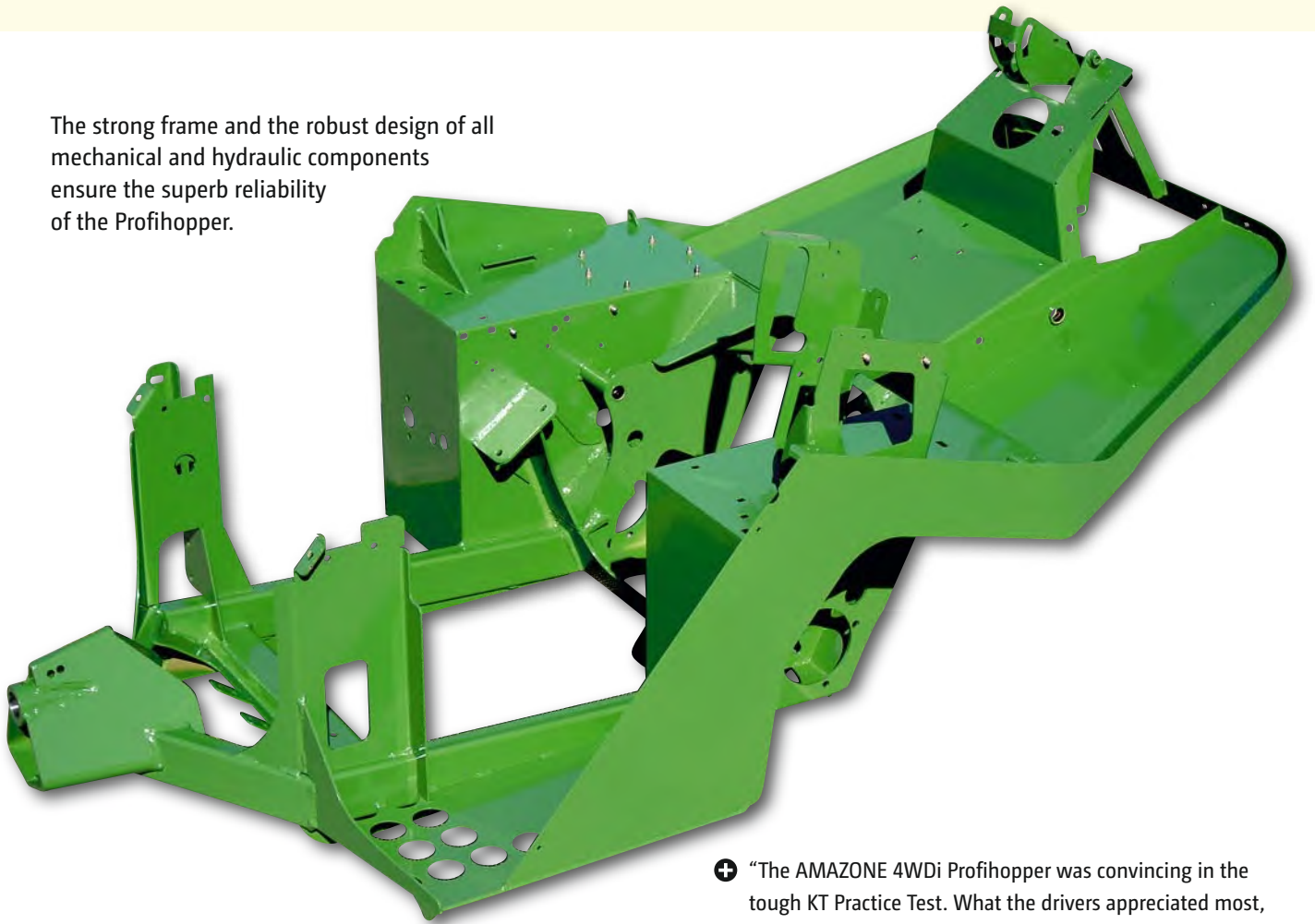
The AMAZONE Profihopper is fitted as standard with a self-cleaning cooling system (AMAZONE Cooling System), that removes the contamination from the radiator grill of any plant residues that collect there, this is especially important when mulching.

⊕ “The engine, well encapsulated against dirt, is located underneath a rubber flap which can be folded upwards.”
(Practice test from the magazine ‘Kommunaltechnik’ · 07/2013)



Maximum robustness

The strong frame and the robust design of all mechanical and hydraulic components ensure the superb reliability of the Profihopper.



⊕ “The AMAZONE 4WDi Profihopper was convincing in the tough KT Practice Test. What the drivers appreciated most, in addition to the thoroughly thought-through concept, was the robustness of the machine.”

(Practice test from the magazine ‘Kommunaltechnik’ 07/2013)



Blade change – simple, quick and safe!

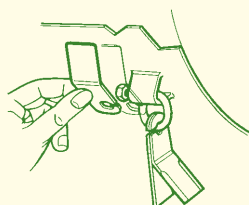
Different blades are available for individual applications

The blades are made from special treated steel to ensure a low wear rate. In addition, the blade system is resistant to foreign obstacles because each blade is independently suspended.



Blade selection	Wing blade sharpened H77 (standard)	Scarifying blade 3 mm	Scarifying blade 2 mm	Wing blade sharpened H60 with scarifying blade
Lawn maintenance	● ● ● ●			
Golf course maintenance	● ● ● ●			
Maintenance of parks	● ● ● ●			
Maintenance of public green spaces	● ● ● ●			
Mowing wild flower meadows and meadow restoration	● ● ● ●			
Leaf collection	● ● ● ●			● ● ● ●
Scarifying		● ● ● ●		
Scarifying golf courses/large grass areas			● ● ● ●	
Paddock maintenance				● ● ● ●

● ● ● ● Outstanding results



Wing blade sharpened H77



Scarifying blade 3 mm



Scarifying blade 2 mm



Wing blade sharpened H60 with scarifying blade

Technical data of the Profihopper

Type	Profihopper PH 1250 zDrive	Profihopper PH 1250 iDrive	Profihopper PH 1250 4WDi
Drive system	Hydrostatic, front wheel drive, 2 hydraulic motors and 2 hydraulic pumps	Hydrostatic, front wheel drive, 2 hydraulic motors and 2 hydraulic pumps	Hydrostatic 4-wheel drive: 4 hydraulic motors and 2 hydraulic pumps
Weight with mowing deck	1,050 kg nett weight 1,600 kg permissible total weight	1,100 kg nett weight 1,600 kg permissible total weight	1,100 kg nett weight 1,600 kg permissible total weight
Steering system	lever steer: Zero-Turn	steering wheel: 0-turning circle	
Engine	Lombardini FOCS diesel, water cooled, 3 cylinder, 1028 ccm, 18 kW (24.5 HP)		
Fuel tank capacity	20 litres diesel		
Hydraulic oil capacity	15 litres		
Braking system	hydrostatic and parking brake		
Mowing deck control	electro-magnetic		
Forward speed	forwards/reverse: 0 to 12 km/h, infinitely variable	forwards: 0 to 12 km/h, infinitely variable reverse: 0 to 6 km/h, infinitely variable	
Tyres	front: 20 x 10.00-10 6PR or 21 x 11.00-10 4PR or 20 x 12.00-10 4PR rear: 15 x 6.00-6 4PR KEVLAR	front: 20 x 10.00-10 6PR or 21 x 11.00-10 4PR or 20 x 12.00-10 4PR rear: 16 x 6.50-8 6PR	front: 20 x 10.00-10 6PR or 21 x 11.00-10 4PR or 20 x 12.00-10 4PR rear: 16 x 6.50-8 4PR KEVLAR
Dimensions with mowing deck	length: 2.785 metres · width: 1.482 metres · height: 1.994 metres		
Mowing deck	Working width: 1.25 metres, SmartCut rotor with 72 (36 pairs) H77 sharpened long wing blades and/or 36 scarifying blades, central step-less working height adjustment, guide wheels: 8 x 3.00-4-4 PR with reinforced Kevlar lining, rear support roller, hydraulic mowing deck lift, mulching flap		
Collection system	Lateral and cross auger with overload safety, hopper volume: 730 litres, (when compressed equates to more than 1,000 litres of collected material), hydraulic high level discharge at 2.10 metres, acoustic 'hopper full' indicator		

Illustrations, content and technical data are not binding! Machine illustrations can vary due to country-specific traffic legislation.



Groundkeeper mower



GBK grass reseeding combination



ZA-XW mounted spreader,
500 l hopper capacity



E+S winter service spreader,
300–1,000 l hopper capacity



AMAZONE S.A. Forbach

B.P. 90106 · 17, rue de la Verrerie · F-57602 Forbach Cedex

Phone: +33 (0)3 87 84 65 70 · Fax: +33 (0)3 87 84 65 71

www.amazone.fr · forbach@amazone.fr