

CONFIDENCE
STARTS
HERE

Pylex[®]

Herbicide

Application Guide



■ - BASF

We create chemistry

Pylex® Herbicide

Strikingly effective weed management tool for greens

Pylex Herbicide offers a new use pattern for the control of warm season grass and broadleaf weeds within cool season turf. This new and unique technology enables the safe and efficient removal of broadleaf weed species and warm season turf species, including Buffalo, Kikuyu, Couch and Queensland Blue Couch grasses, from cool season turf, including on Bent grass greens. As the only solution for selective weed control of its kind, Pylex Herbicide replaces current manual, mechanical removal of unwanted encroaching turf from your collars into your greens.

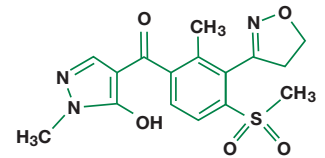
Pylex Herbicide revolutionises Bent grass greens management in not only its efficacy, but also its advances to labour efficiencies and turf safety with its pre-measured packaging.



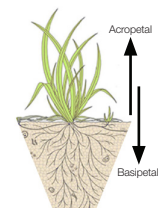
The science behind the active ingredient

How does this influence our application strategy?

Topramezone is a highly selective active ingredient, which controls a broad spectrum of grass and broadleaf weeds when applied post-emergence. It is an inhibitor of 4-hydroxyphenylpyruvate dioxygenase (4-HPPD) in the biosynthesis of plastoquinone and indirectly of carotenoids. Chloroplast synthesis and function is disturbed.



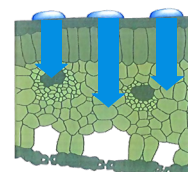
Readily absorbed by treated foliage, Pylex Herbicide is translocated systemically within the target weed both acropetally and basipetally. While Topramezone is taken up via the roots and shoots and is translocated in the plant, the labelled application strategy lends to a predominantly foliar focus. This leads to strong bleaching effects (by oxidative degradation of chlorophyll) particularly on the growing zones of the shoot in sensitive weeds. Susceptible weeds cease growth soon after application.



Under the influence of light, chlorotic tissues become necrotic, and plants usually die within 21-28 days after treatment.



Methylated Seed Oils (MSO) enhance leaf absorption as they maximise coverage and penetration of the chemistry into the target weed. The use of an MSO is included on the label application rates and are required for optimal efficacy.



Incorporating **Pylex Herbicide** into Bent grass greens management

Considering the highly specific and targeted behaviour of Pylex Herbicide, it is important to ensure correct application for reliable results, taking particular care with **sprayer calibration** and **conditions conducive for success**. In addition to calibration of equipment, there are a number of factors which affect control and should be considered when planning your Pylex Herbicide program.

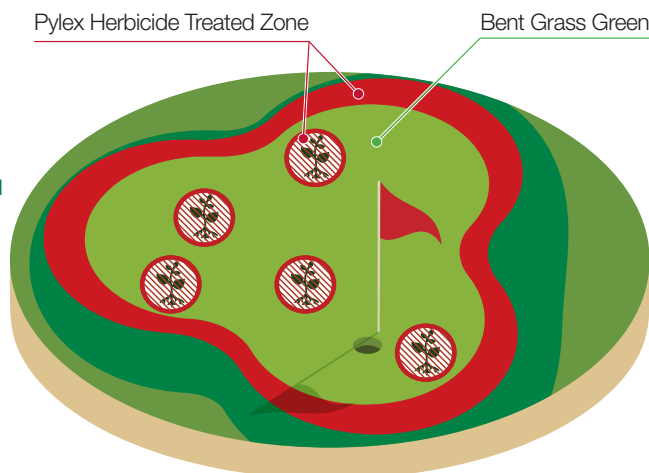
Pylex Herbicide promotes turf safety and ease of application while minimising the risk of mixing errors. Application strategies capture Pylex Herbicide's capacity for versatile greens management including inner green perimeter, whole green, large patch or targeted spot spray treatments.



Early encroachment and actively growing weeds are more susceptible than more advanced growth stages. Pylex Herbicide should be applied when weeds are not in their strongest, fittest growth stage and state for best results.



Pylex Herbicide is a light-activated technology, as it works to disrupt the photosynthetic cycle of target weeds. Conditions conducive to maximum photosynthesis (moist, warm, bright sunshine) are ideal.



Cool weather can reduce the speed of activity. Pylex Herbicide's **performance is maximised in consistently bright, warm conditions**.



MSOs are essential to assist Pylex Herbicide in penetrating the leaf for consistent control. Required rates for MSO adjuvants can be found on the directions for use table of the Pylex Herbicide label.



Good coverage of the target weed is essential to achieving reliable control. Even coverage enables Pylex Herbicide's excellent translocation capacity to be maximised. This factor takes into account calibration of spray equipment, and use of a high quality MSO.



Kicking off YOUR Pylex Season

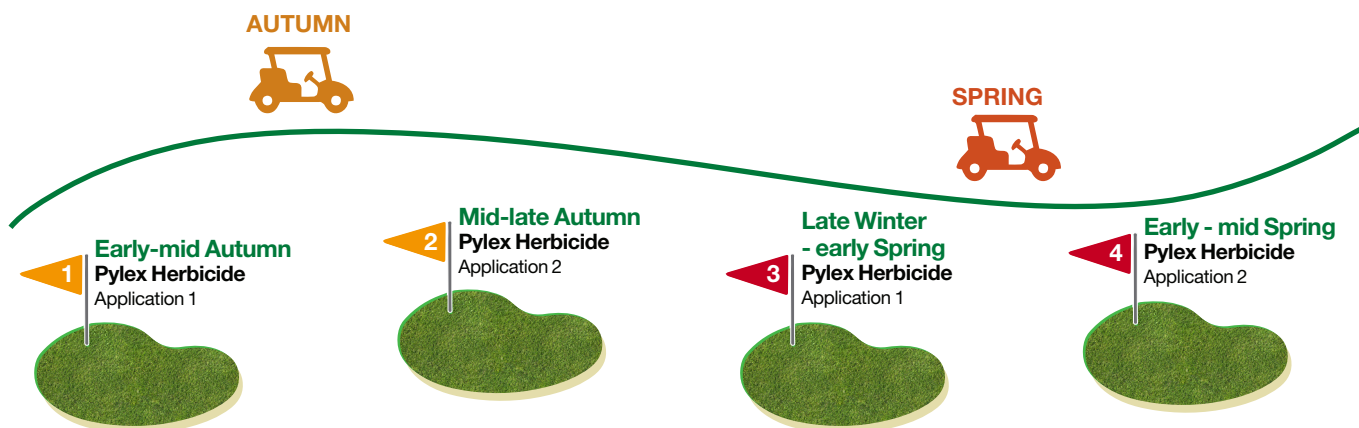
Using Pylex Herbicide in a program

Ideal application windows for Pylex Herbicide should take into account local factors, and factors affecting control.

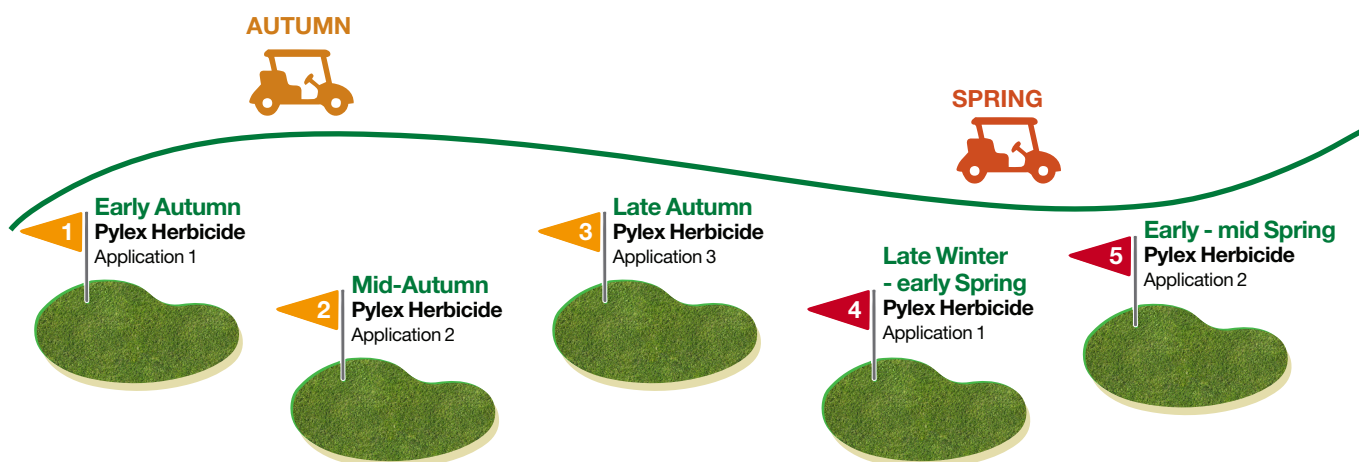
Autumn brings the slowed growth of our target warm season grasses, cooler ambient and soil temperatures. The vast and diverse nature of the Australian turf market sees these typical Autumn conditions vary across climates. Turf managers should be observing changes in weather, plant growth, and soil temperature on their sites, allowing them to gauge when **their** Autumn and Pylex season has arrived.

Spring offers a second opportunity for application as light intensity is maximised while also favouring susceptible weed growth stages. The below proposed programs capture a re-application interval of 21-28 days with applications dependent on weed establishment. There are opportunities for additional applications, and movement outside of this seasonal window, dependent on climate and establishment of the target runners.

Immature Target Weeds



Mature Target Weeds



For more information on Pylex® Herbicide, visit turf-solutions.basf.com.au or call 1800 558 399