



**BIO-INOCULANT FOR TURF & AMENITY
HORTICULTURE SITUATIONS**

Active Ingredient: *Trichoderma viride* 10⁸ cfu/gram



FOR MORE INFORMATION ON BioMAX FORTIFY, CONTACT YOUR LOCAL TERRITORY MANAGER OR CALL 1800 631 008.

www.nuturf.com.au

EMAIL: BioMAX@nuturf.com.au



Bio-inoculants at their best



BIO-INOCULANT FOR TURF & AMENITY HORTICULTURE SITUATIONS

Active Ingredient: *Trichoderma viride* 10⁸ cfu/gram

“THE ENHANCED BIO-ACTIVITY WILL STIMULATE ROOT INITIATION, PRODUCE A MORE VIGOROUS ROOT SYSTEM AND PROMOTE BETTER UTILISATION OF APPLIED NUTRIENTS TO GIVE TURF AND AMENITY PLANTS MORE RESISTANCE TO ADVERSE CONDITIONS.”

BioMAX Fortify

BioMAX Fortify contains selected strains of beneficial fungi, namely *Trichoderma spp.* When applied to turf or incorporated into other growing media BioMAX Fortify will establish a strong beneficial bio-inoculant population that will colonise at the root zone to provide an improvement in the growing environment for plant roots. More specifically, this enhanced bio-activity will stimulate root initiation, produce a more vigorous root system and promote better utilisation of applied nutrients to give turf and amenity plants more resistance to adverse conditions.

Key Benefits of BioMAX Fortify

- Enhances root vigour, growth and health.
- Highly concentrated form of *Trichoderma* bio-inoculant.
- Safe for the environment, user and the public.
- Proven independent research verifying the *Trichoderma* bio-inoculant works.
- Ideal for use in both turf and amenity plantings.
- Improves nutrient uptake and availability.
- Assists your plant in protecting against root borne plant pathogens such as *Pythium*, *Rhizoctonia* and *Fusarium*.
- Useful in an organic program approach in sensitive environments.

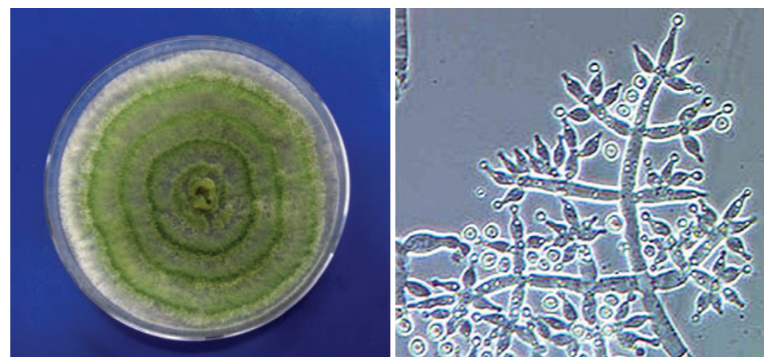
The BioMAX Fortify Product Characteristics

Formulation:	Wettable powder
Appearance:	Off white powder
Odour:	Earthy
Solubility in water:	Suspends in water solution
Concentration:	<i>Trichoderma viride</i> 10 ⁸ cfu/gram

Trichoderma viride and its role in the plant

Background on the *Trichoderma viride* Fungus

Trichoderma viride is a fungus (mould) which produces spores by mitosis. The mycelium of *Trichoderma viride* can produce a variety of enzymes, including cellulases and chitinases which can degrade cellulose and chitin respectively. The mould can grow directly on wood, which is mostly composed of cellulose, and on fungi, the cell walls of which are mainly composed of chitin. Due to these characteristics, *Trichoderma viride* has been researched and proven to parasitize the mycelia and fruiting bodies of several soil borne plant pathogenic fungi such as *Pythium*, *Rhizoctonia* and *Fusarium* species.



Trichoderma viride fungal growth
Source: Wikipedia.

Mycelial growth under the microscope.
Source: Wikipedia.

Trichoderma viride and bio-fertiliser effects

The soil surrounding the roots of the plant (rhizosphere) presents a very intense area of biological activity, which is crucial in the proper development of plants. In the rootzone there are many micro-organisms that help to assist the nutrition and overall health of plants.

In addition to this, *Trichoderma viride* has also been found to increase the uptake of nutrients through enhancement of root development. The improvement in root development is likely to be due to reduced plant pathogen incidence as well as the improved nutrient availability.

Directions for Use

SITUATION	RATE	TIMING	CRITICAL COMMENTS
Turf	1st application 800g/ha then 400g/ha monthly.	Apply monthly August – April.	Apply with fish mouth or boom sprayer early morning or late afternoon and drench-in immediately with enough water to move the product into the thatch layer (6-12mm). Apply with FoliMAX Amino+ at 20L/ha.
Nursery irrigation	20g/100m ²	Monthly	Mix up enough product in a 20L bucket with FoliMAX Amino+ @ 100 ml/100m ² , filter and inject into irrigation line so that all plants receive a dose.
Landscape / ornamental plants	400g/ha in 200 – 300L of water.	Apply two times per year. Soak roots at planting or apply as a drench.	Use in combination with FoliMAX Amino+ at 20L/ha.
Seedlings	20g/100m ²	Treat seeds prior to planting and at emergence.	Apply to seedling trays through irrigation making sure to drench the trays. Apply with FoliMAX Amino+.

Mixing

Make sure all measuring equipment, containers, and tanks are free of chemicals and chlorine. Weigh out required amount of BioMAX Fortify and use a general household strainer or spray tank strainer to wash the product through into the spray tank or container. Add the required amount of BioMAX Fortify, agitate and apply within 4 hours of mixing.

Compatibility

BioMAX Fortify contains a living fungus and is sensitive to very high salt contents, chlorine based liquids and a number of fungicides including propiconazole, tebuconazole and carbendazim. Please ask your Nuturf Territory Manager for a BioMAX Fortify Compatibility Guide if you have any concerns.

Storage and disposal

BioMAX Fortify should be stored in cool dry place at or below 25 degrees Celsius. BioMAX Fortify is produced by surface technology which causes the hardening of the spores. This harden spore technology is proprietary technology resulting in the BioMAX Fortify *Trichoderma* spore withstanding adverse environmental conditions such as dry conditions and increased temperature.



Storage of BioMAX Fortify does not require refrigeration as harden spore technology makes for a much more robust *Trichoderma* spore across a range of conditions.

Trichoderma that require refrigerated storage at or around 4 degrees Celsius lack field resilience as they are temperature sensitive and will therefore lack field robustness when compared to BioMAX Fortify.

Bio-inoculants at their best